

# The ESA EO Data Policy for ERS and ENVISAT

- The new ESA EO Data Policy for ERS and ENVISAT

- Status of the Implementation of the new Data Policy

- Data Access Opportunities for Met. Services

## The ESA EO Data Policy

defines the rules for ESA and its partners to serve and support users both in science and in applications

ensures the mission objectives defined and agreed by member states in the programme proposal

aims at 'maximising the beneficial use of ERS and ENVISAT data'

# The Data Policy

1991-1999

← ERS Data Policy →

ESA-AOs

MOUs with Nat./ Foreign  
Stations

Interagency Agreements

Single Distr. Entity for  
operational / commercial  
Users

1999-2003

← ERS & ENVISAT Data Policy →

ESA resp. for Cat.1 use

Competing Distr. Entity resp.  
for cat. 2 use (mainly  
applicable to SAR, ASAR and  
MERIS data)

## New Data Policy, Main difference

- > 'CATEGORIES OF USE' rather than 'USER CATEGORIES'
- > Several Distributing Entities rather than one Consortium of Distributors (Competition !)
- > Distributing Entities selected via ITT (direct appointment for specific markets)
- > Market Development Responsibility delegated more to Distributing Entities:
  - Setting of End User Prices (for Category 2 use); reduction of ESA's price to distrib. entities
  - Direct Negotiations and Agreement with NFS (for category 2 use)
  - business plan
  - competition for market

## Categories of Use

### Category 1 Use (Research & applications development)

- Rules for identification fixed in Annex C of Data Policy (e.g. Peer Reviews, AOs, Negotiated and approved Research Projects agreed with other Space Agencies or International Research Organisations)
- served by ESA
- Cost of Reproduction; Waivers to be approved by PB-EO

### Category 2 Use (operational and commercial use)

- served by appointed Distributing Entities (open market)
- User Price at discretion of Distributing entities (ESA will only charge a price close to cost of reproduction)
- Distributing Entities may negotiate directly with NFS for cat.2 use

Use will be monitored by 2 advisory groups and PB-EO

## Transition

Existing agreements for ERS-1 and ERS-2 are honored

New agreements (with new stations and all agreements for ENVISAT) will be based upon the new data policy

## Current Status of Implementation of the New Data Policy

ESA is negotiating with

- 2 consortia having submitted proposals for worldwide ERS/ENVISAT distribution contracts
- 1 institution having requesting limited distribution rights (CCRS)

**EMMA:** Eurimage (I), ASI (I), DERA (UK), DLR (D), DSS (D), NRSC (UK), TELESPAZIO (I) plus others associated via Letters of Intent

**SARCOM:** SPOTIMAGE (F), CRISP (SINGAPORE), GEOSERVE (NL), NLR (NL), NPA (UK), RADARSAT INTERNATIONAL (CND), SATELLUS (S), TSS (N) plus others associated via Letters of Intent

## Previous ERS Agreements with Met. Services

“National meteorological services belonging to WMO member states or national organisations providing an equivalent service, plus EUMETSAT and ECMF and not the entire meteorological community at large....shall receive ERS FD LBR data free of charge... with the proviso that

- the data shall be used for forecasting services only
- the data shall be held exclusively by the users themselves and shall not be copied or transferred....

However.. such users shall continue to freely disseminate weather forecast products, regardless whether ERS data has been utilised in their product.”

Extract from the ERS data policy 1990/1994



## Past Issues and Problems

Reporting/publications/presentations from the Met. Community have been insufficient; (example Gothenburg Symposium).

Onward distribution not respected

## Scientific Use

Scientific projects by Met. Services will be handled through the category-1 scheme

The data can be provided

- at cat-1 price (following project approval after peer review)
- free of charge (following project approval after peer review and PB-EO approval)

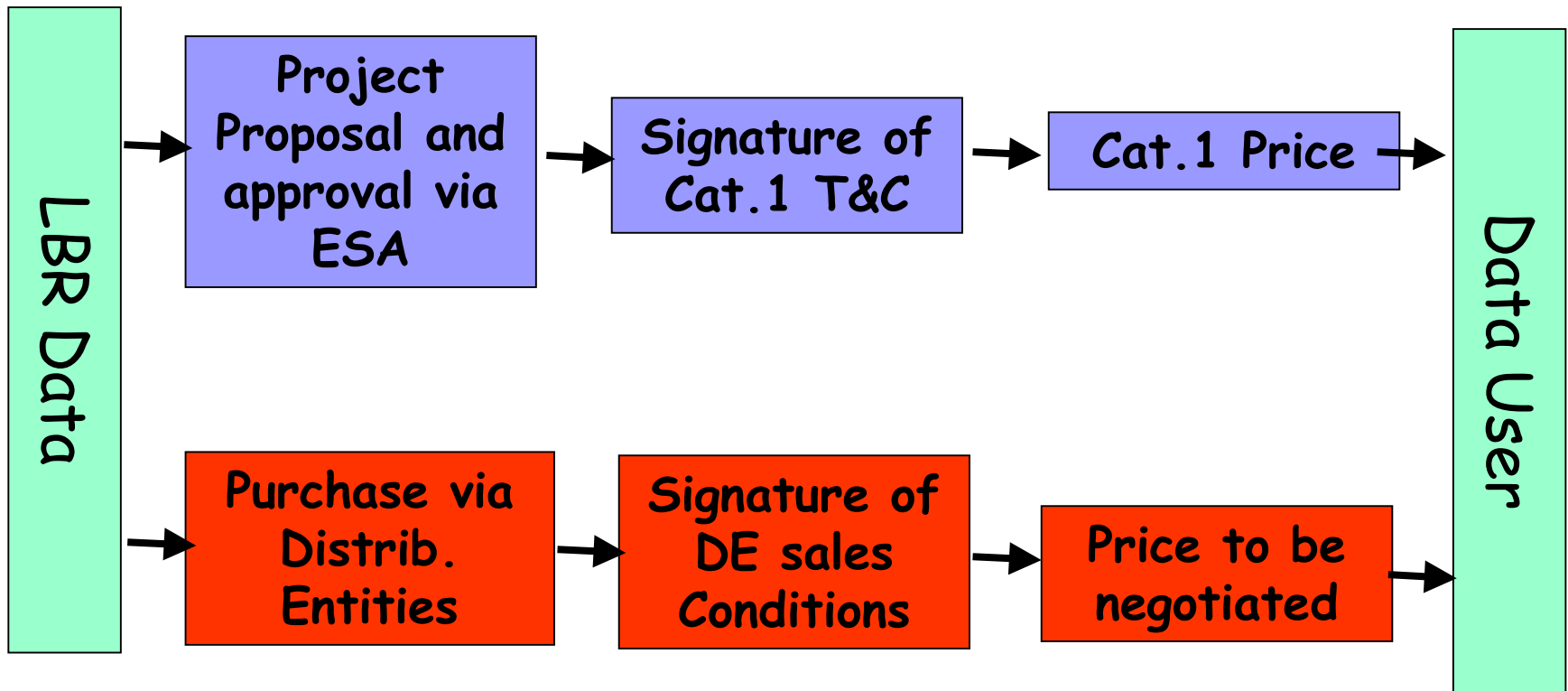
Category-1 terms and conditions apply e.g.:

- project approval by ESA through peer review
- obligation to report and publish results
- use of the data exclusively limited to the agreed scope of the project
- no onward distribution of the ERS/ENVISAT data

## Operational Use

Operational Use of the data is governed by the rules for category-2 use. Related data distribution is delegated to distributing entities (applicable to SAR, ASAR and MERIS HR data).

## LBR Data Distribution



## Proposal for LBR data service to the Met. Community

**LBR data will be distributed for all use at conditions similar to  
cat.1 conditions:**

- by ESA directly
- in response to a project proposals
- at category-1 prices (near cost of reproduction)
- after signature of the category-1 terms and conditions

## Category 1 ERS LBR prices (examples)

WSC FD	on-line	free (after project approval)
WSC FDC	12 Exabyte/year	100 Euro
RA FD	on-line	free (after project approval)
RA FDC	12 Exabyte/year	100 Euro
GOME.LVL13	10 CDs/months	50 Euro
GOME.LVL13	on-line ftp server	free (after project approval)
GOME.LV22	12 CDs/year	50 Euro
GOME.LVL22	on-line ftp server	free (after project approval)

ENVISAT data prices for cat.1 will be at a similar level

## Category 1 Project Proposals Incl. Proposals for use of LBR data by Met. Services

Project Proposals (going beyond agreed cal/val and AO activities) can be submitted directly at :

<http://projects.esa-ao.org/>

The site includes

- the data policy documents
- the terms & conditions for the category-1 use of data
- the prices for category-1 use

## Interfaces, Contact Points

Technical questions concerning ERS and ENVISAT and related products and service:

EO help desk:            [eohelp@esrin.esa.it](mailto:eohelp@esrin.esa.it)  
                                 phone +39-06-94180-777  
                                 fax    +39-06-94180-272

For initial questions/discussions concerning access to ERS & ENVISAT data especially from large institutional users :  
Earth Observation Mission Management Office (APP-AM)  
[gunther.kohlhammer@esrin.esa.it](mailto:gunther.kohlhammer@esrin.esa.it)  
phone +39-06-94180-360/361  
fax    +39-06-94180-362



## ERS& ENVISAT Symposium

GOTHENBURG

Sweden

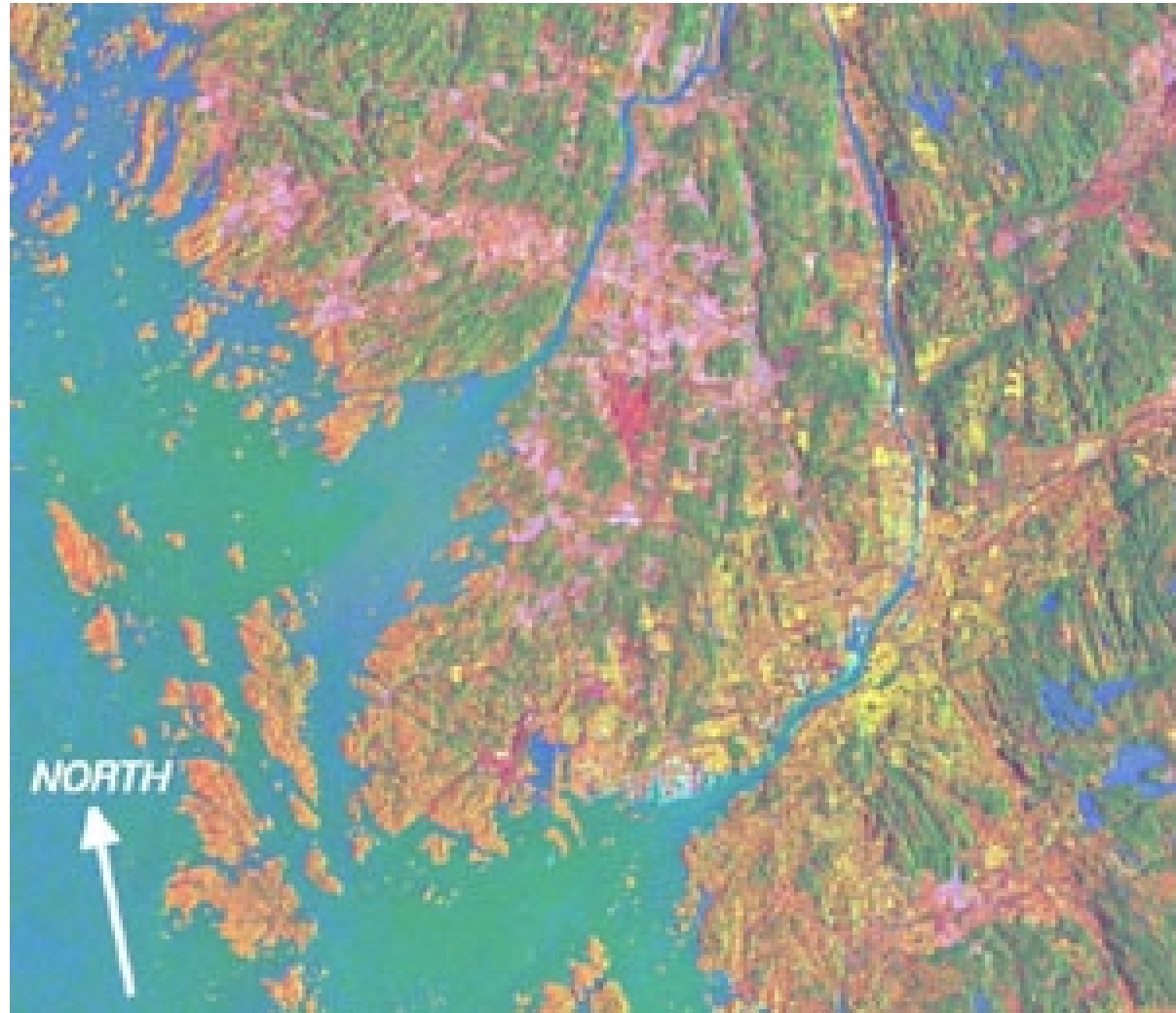
16 - 20 Oct. 2000

340 presentation

120 posters

600 participants

<http://www.esa.int/sympo2000/>



## ENVISAT Projects as of Today

### Category-1

65% Image-type data (ASAR, Meris HR, AATSR)

23% atmospheric data from Gomos, Sci, Mipas

### Category-2 (today)

97% ASAR

3% Meris

